

LEGEND

- VARI LITE 1000 TUNGSTENERS @1X
- ETC S4 10' @875w
- ETC S4 19' @875w
- ETC S4 19' @750w
- ETC S4 26' @875w
- ETC S4 26' @750w
- ETC S4 36' @875w
- ETC S4 50' @875w
- ETC S4 PAR MFL @875w

- CHANNEL #
- COLUMN #
- UNIT #
- MOVING LIGHT FIXTURE #

DRAWING SCHEDULE

| VER | DATE | DESCRIPTION |
|-----|----------|---------------|
| 1 | 4/03/06 | PRELIMINARY |
| 2 | 8/11/06 | SHOP PREP NYC |
| 3 | 10/05/06 | FINAL NYC |

A CHORUS LINE

SCHOENFELD THEATRE, NYC

Directed by: Robert Avian Set by: Robin Wagner

Lighting by: THARON MUSSER
Adapted by: NATASHA KATZ

LIGHT PLOT

J.L.D. 170 LIGHTING DESIGN

Plate 1 of 5 Scale: 1/4" = 1'-0" Date: 10/05/2006 FINAL

GRID HEIGHT 59'-9"
 MAXIMUM PIPE TRAVEL 59'-0"

NOTES:

- ALL ELECTRICS TAIL DOWN FROM HOUSE SYSTEM PIPE.
- SHOW 0'-0" TAKEN FROM PORTAL BORDER.
- STIFFEN 7 ELECTRIC SL + SR AND 8 ELECTRIC TO PREVENT SHAKING OF ELECTRIC BY MOVING LIGHT.

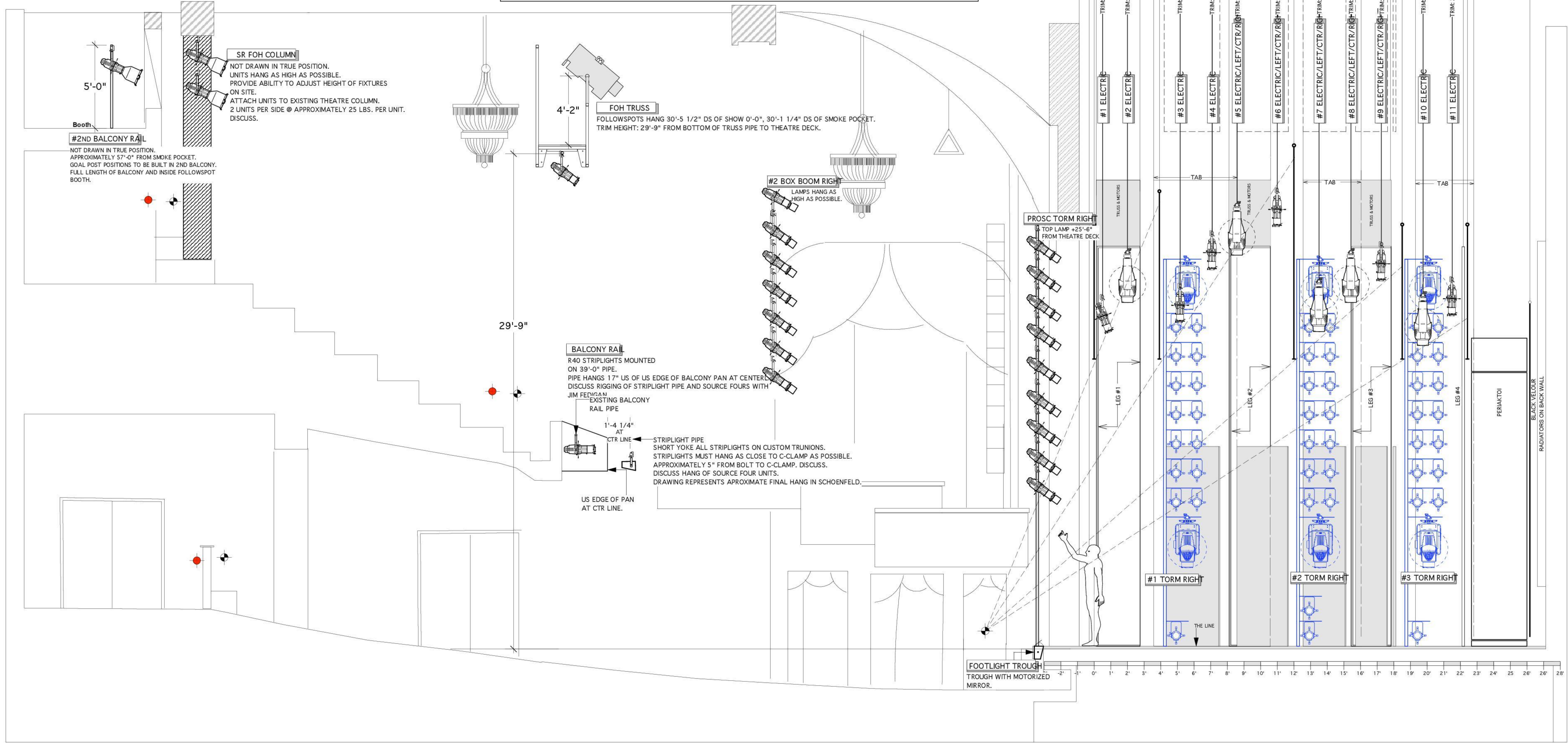
DISTANCE FROM 0'-0" →
 TRIM FROM SHOW DECK →

| | | | | | | | | | | | | |
|--|------------------------------|------------------------------|------------------------------|------------------------------|------------------------------|------------------------------|------------------------------|------------------------------|------------------------------|-------------------------------|-------------------------------|---|
| SMOKE POCKET 2'-0" US 2'-0" FROM US 2'-0" FROM SR | #1 ELECTRIC 1'-0" FROM SR | #2 ELECTRIC 1'-0" FROM SR | #3 ELECTRIC 1'-0" FROM SR | #4 ELECTRIC 1'-0" FROM SR | #5 ELECTRIC 1'-0" FROM SR | #6 ELECTRIC 1'-0" FROM SR | #7 ELECTRIC 1'-0" FROM SR | #8 ELECTRIC 1'-0" FROM SR | #9 ELECTRIC 1'-0" FROM SR | #10 ELECTRIC 1'-0" FROM SR | #11 ELECTRIC 1'-0" FROM SR | 2'-0" MAX VERTICAL TRIP IN THE BALCONY |
|--|------------------------------|------------------------------|------------------------------|------------------------------|------------------------------|------------------------------|------------------------------|------------------------------|------------------------------|-------------------------------|-------------------------------|---|

NOTE:
 ONSTAGE TRIM HEIGHTS TO BE DETERMINED ON SITE DUE TO DIFFERENT SIGHT LINES FROM CURRAN THEATRE.
 SHOW DECK HEIGHT TBD.

FOH TRUSS NOTES

- FOLLOWSPOTS HANG ON US PIPE OF FOH TRUSS.
- TRUSS RIGGED WITH THREE FOLLOWSPOTS AND THREE OPERATORS.
- TRUSS TO BE STABILIZED TO PREVENT ANY MOVEMENT OF TRUSS BY FOLLOWSPOT OPERATORS.
- PROVIDE ACCESS TO TRUSS.



THIS DRAWING REPRESENTS VISUAL CONCEPTS AND CONSTRUCTION SUGGESTIONS ONLY. THE DESIGNER IS UNQUALIFIED TO DETERMINE THE ELECTRICAL OR STRUCTURAL APPROPRIATENESS OF THIS DESIGN AND WILL NOT ASSUME RESPONSIBILITY FOR IMPROPER ENGINEERING, CONSTRUCTION OR USE. ALL MATERIALS AND CONSTRUCTION MUST MEET THE MOST STRINGENT LOCAL FIRE SAFETY CODES.

A CHORUS LINE

SCHOENFELD THEATRE NYC

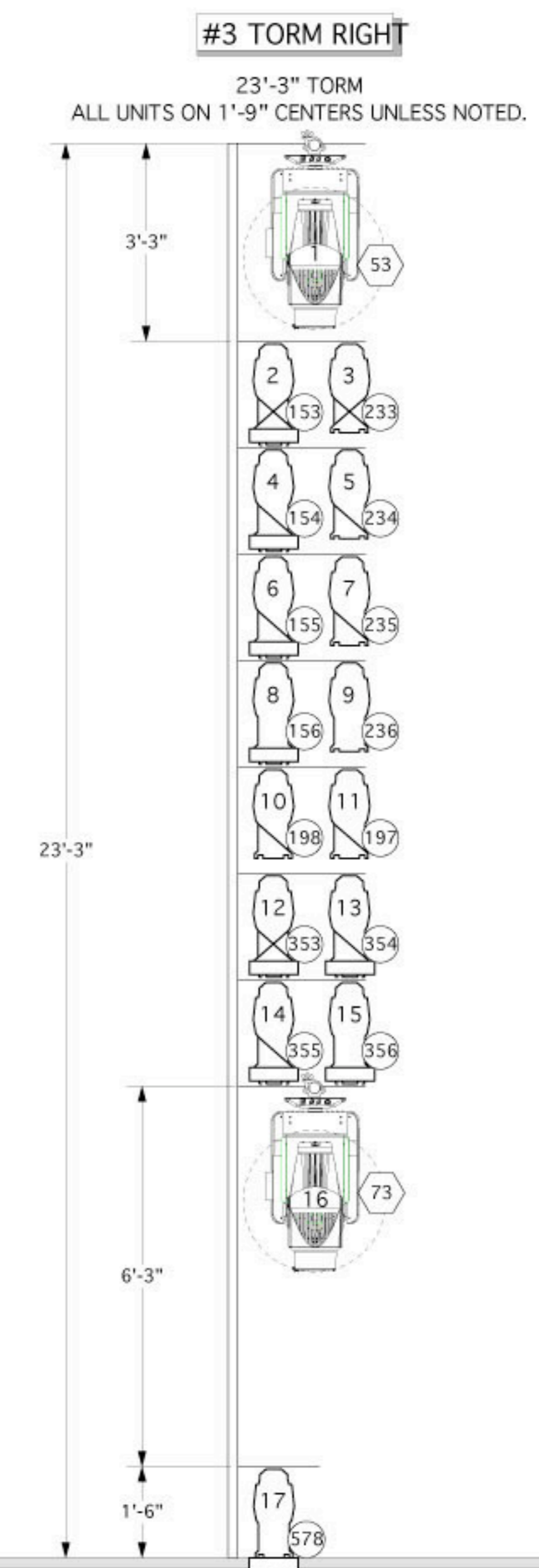
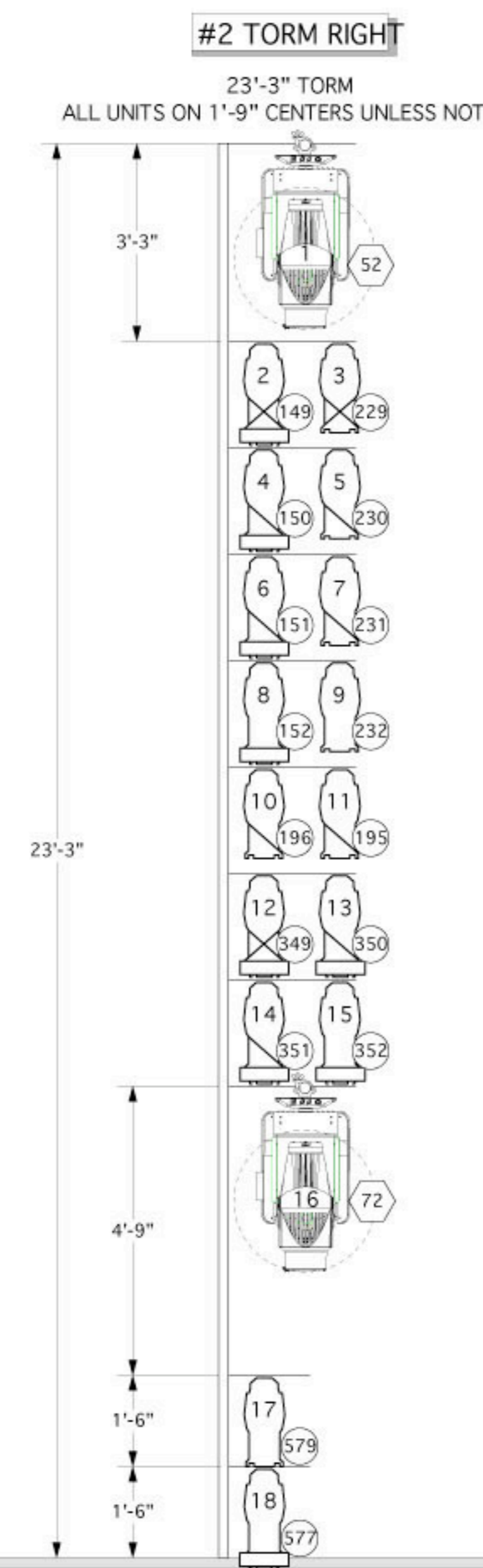
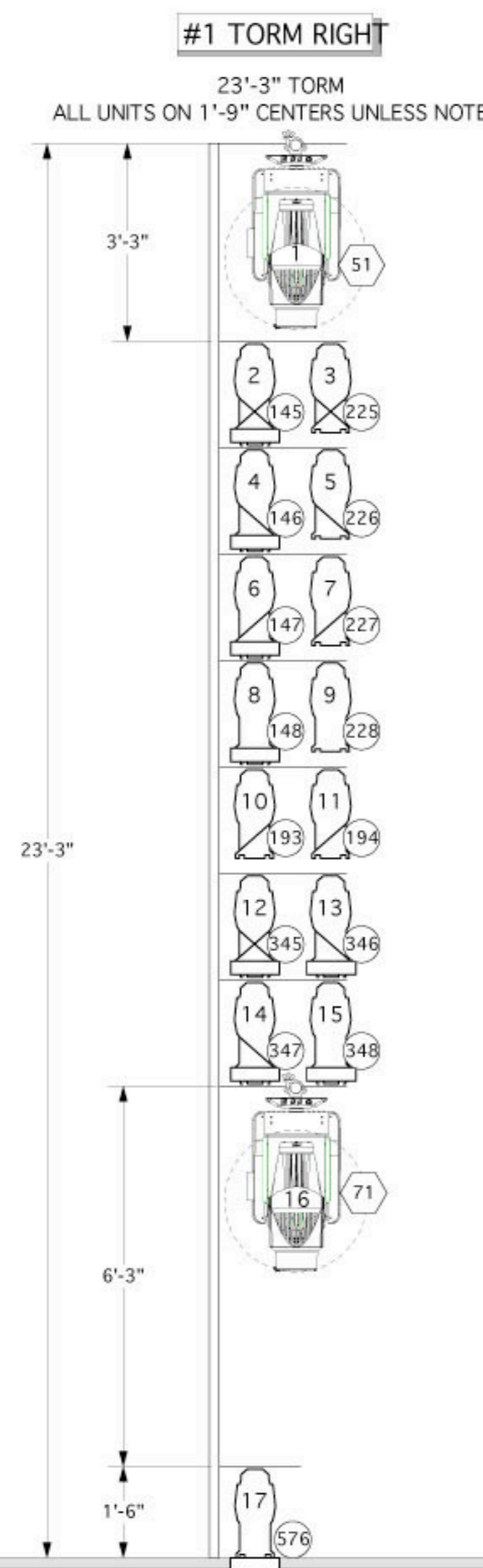
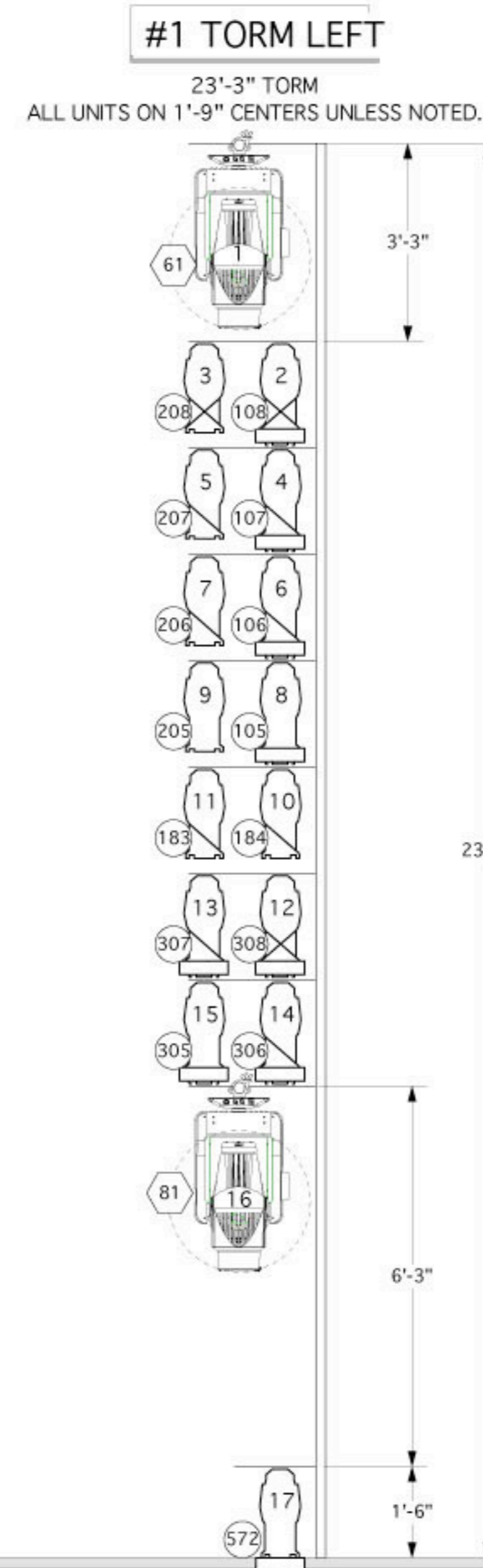
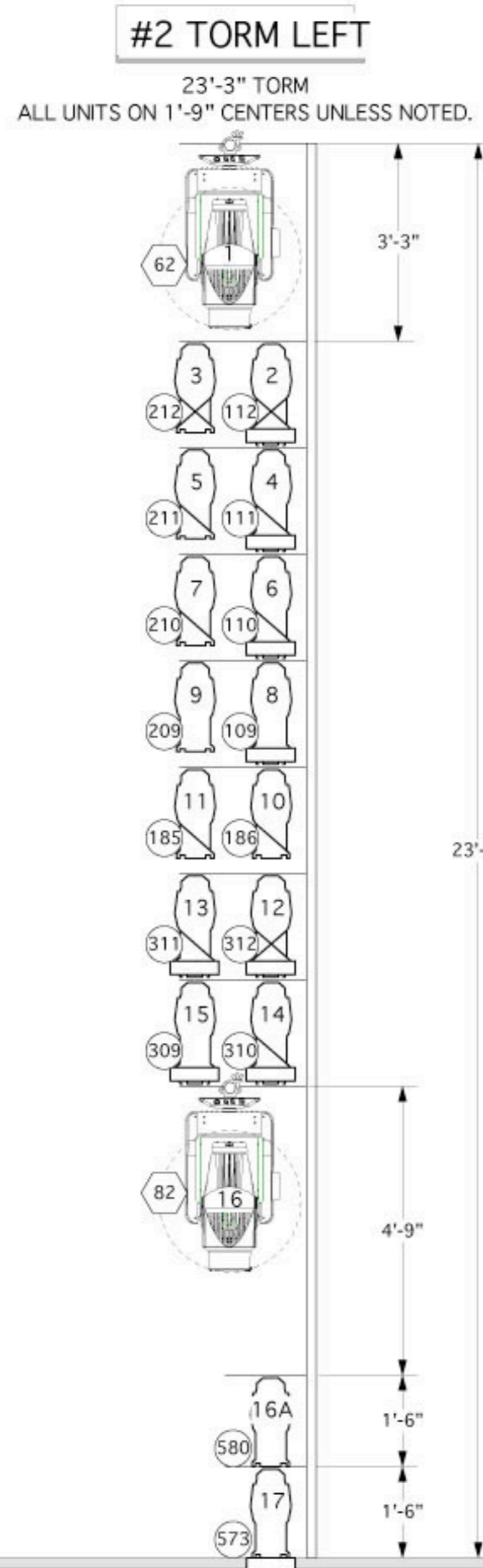
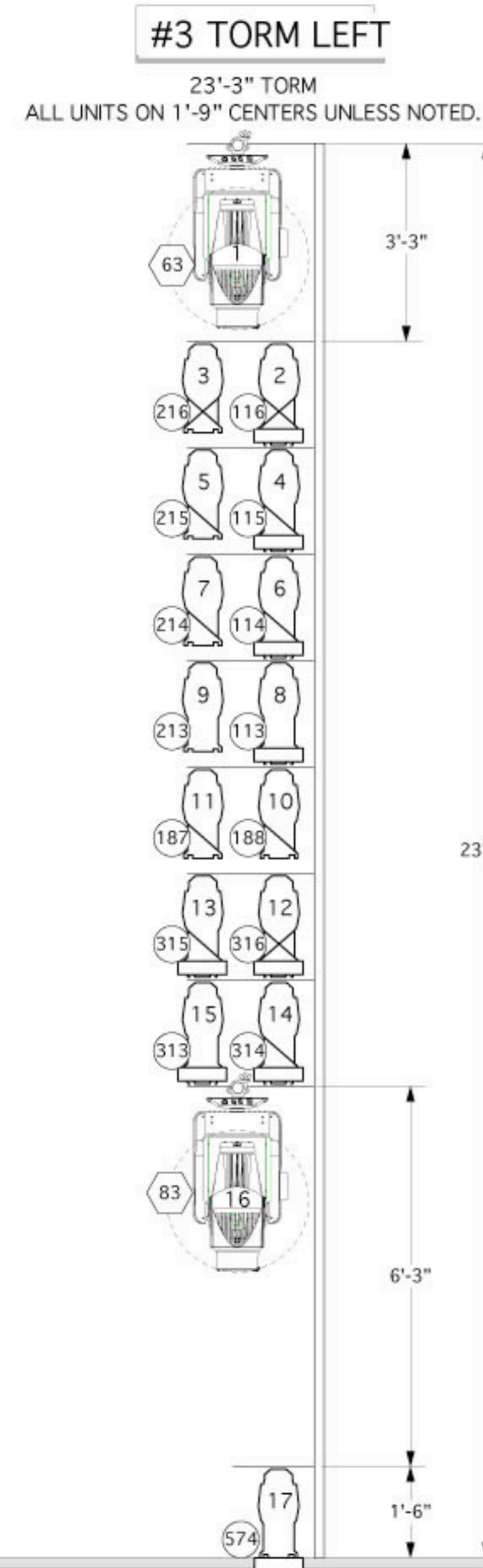
Directed by: Robert Avian Set by: Robin Wagner

Lighting by: THARON MUSSER
 Adapted by: NATASHA KATZ

SECTION

L.D. 170
 LIGHTING DESIGNER

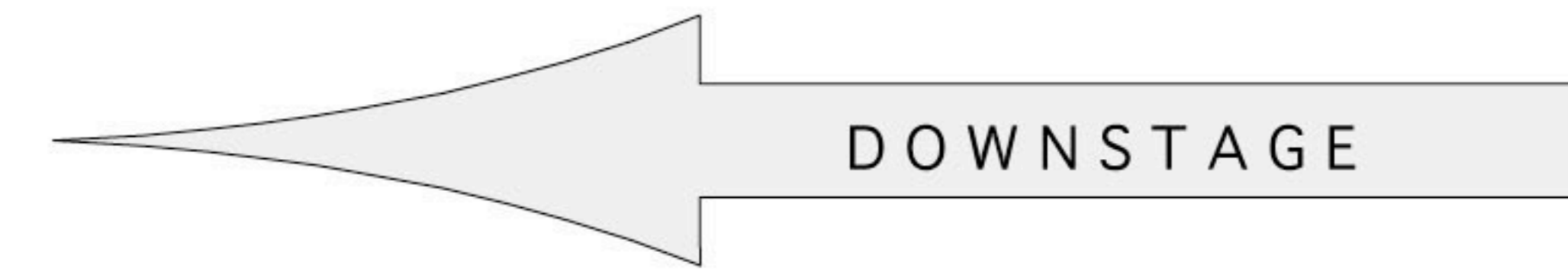
Scale: 1/4" = 1'-0" Date: 5/10/2006 Plate 3 of 3 FINAL



STAGE LEFT



STAGE RIGHT



NOTES:
ALL VERTICAL MEASUREMENTS ARE TO SHOW DECK.
ALL MEASUREMENTS TAKEN FROM SHOW 0'-0" NOT PLASTER LINE.
CONFIRM PLACEMENT OF ALL TORMS PRIOR TO DEADING OFF.
STIFFEN ALL TORMS - TORMS MUST BE TIED OFF TO SOMETHING STABLE.

LEGEND

- VARI LITE 1000 TUNGSTEN ERS @1K
- ETC S4 19' @575w
- ETC S4 26' @575w
- ETC S4 36' @575w
- ETC S4 50' @575w
- ETC S4 PAR MFL @575w
- CHANNEL #
- COLORAM II
- UNIT #
- MOVING LIGHT FIXTURE #

DRAWING SCHEDULE

| VER. | DATE | DESCRIPTION |
|------|----------|---------------|
| 1 | 8/11/06 | SHOP PREP NYC |
| 2 | 10/05/06 | FINAL NYC |

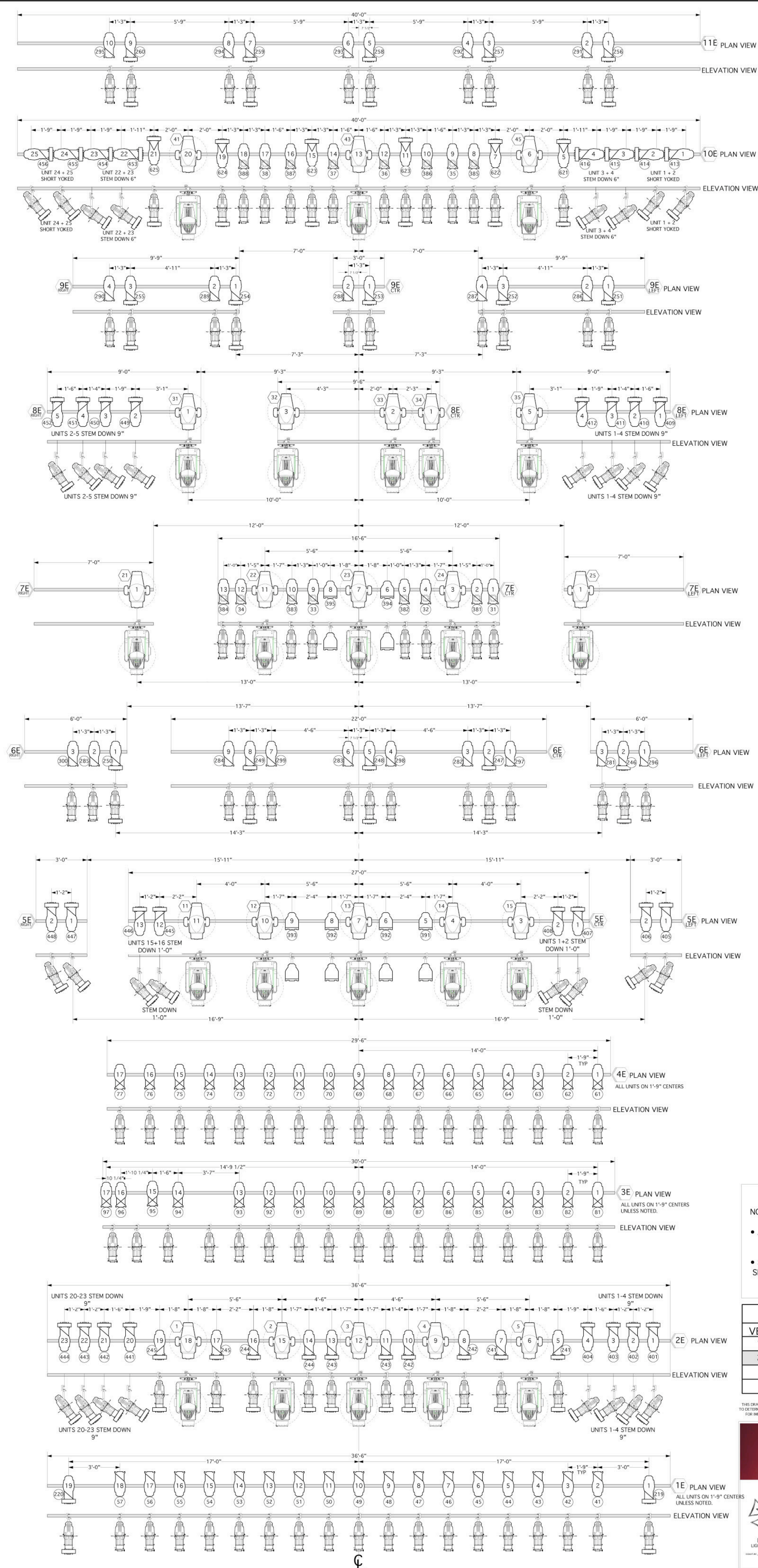
THIS DRAWING REPRESENTS VISUAL CONCEPTS AND CONSTRUCTION SUGGESTIONS ONLY. THE DESIGNER IS UNQUALIFIED TO DETERMINE THE ELECTRICAL OR STRUCTURAL APPROPRIATENESS OF THIS DESIGN AND WILL NOT ASSUME RESPONSIBILITY FOR IMPROPER ENGINEERING, CONSTRUCTION, OR USE. ALL MATERIALS AND CONSTRUCTION MUST MEET THE MOST STRINGENT LOCAL FIRE SAFETY CODES.

A CHORUS LINE

SCHOENFELD THEATRE, NYC
Directed by: Robert Avian Set by: Robin Wagner
Lighting by: THARON MUSSER
Adapted by: NATASHA KATZ

TORMS

L. D. 170 LIGHTING DESIGNER
Scale: 1/2" = 1'-0" Date: 10/05/2006 Plate 4 of 5 FINAL



NOTES:

- ALL ELECTRICAL TAIL DOWN FROM HOUSE SYSTEM PIPE.
- STIFFEN 7 ELECTRIC SL + SR AND 8 ELECTRIC TO PREVENT SHAKING OF ELECTRIC BY MOVING LIGHT.

| DRAWING SCHEDULE | | |
|------------------|----------|---------------|
| VER. | DATE | DESCRIPTION |
| 1 | 8/11/06 | SHOP PREP NYC |
| 2 | 10/05/06 | FINAL NYC |

THIS DRAWING REPRESENTS VISUAL CONCEPTS AND CONSTRUCTION SUGGESTIONS ONLY. THE DESIGNER IS UNQUALIFIED TO DETERMINE THE ELECTRICAL OR STRUCTURAL APPROPRIATENESS OF THIS DESIGN AND WILL NOT ASSUME RESPONSIBILITY FOR IMPROPER ENGINEERING, CONSTRUCTION, OR USE. ALL MATERIALS AND CONSTRUCTION MUST MEET THE MOST STRINGENT LOCAL FIRE SAFETY CODES.

A CHORUS LINE

SCHOENFELD THEATRE, NYC
 Directed by: Robert Avian Set by: Robin Wagner
 Lighting by: THARON MUSSER
 Adapted by: NATASHA KATZ

L. D. 170 LIGHTING DESIGNER

OVERHEAD ELECTRICS DETAIL

Scale: 1/2" = 1'-0"
 Date: 10/05/2006
 Plate 5 of 5

LEGEND

- VARI LITE 1000 TUNGSTEN ERS @1K
- ETC S4 19" @575w
- ETC S4 26" @575w
- ETC S4 36" @575w
- ETC S4 50" @575w
- ETC S4 PAR MFL @575w
- ALTMAN 10" SCOOP @400w
- CHANNEL #
- COLORAM II
- UNIT #
- MOVING LIGHT FIXTURE #